

General Rules

1. All exhibitors agree to be bound by the rules and regulations of the Mountain Area Community Fair.
2. The Fair Management reserves the right to amend or add to these rules and regulations as its judgment may determine.
3. Every effort will be made to protect all exhibits on display from all injury and damage, but the Fair is not, in any way, to be held responsible for accidents, loss or damage by water, fire, theft, or otherwise, whatever may be the cause or extent of the damage or loss.
4. Entries will be made according to classification.
5. Premiums, as listed, may be given for meritorious exhibits. In cases where there is no competition, judges may give an award such as they deem the exhibit is worthy to receive. The same rules apply where there are fewer entries in any class than the number of premiums offered. The judges may at their discretion, award a prize or prizes of such grade as the exhibit deserves. The fair will accept only one entry in each class per exhibitor. The decision of the judges shall be final in all cases where mistakes, fraud, misrepresentation, or collusion, not discovered at the Fair or show, or such referee as he may appoint, may make the decision. The case may be appealed to the Fair Board of Directors from whose decision there can be no appeal.
6. It shall be the responsibility of the exhibitor to make known the proper name of the article he is entering. Any item entered improperly will be disqualified to receive a prize, but the judge will mark the correct name on the entry tag for the benefit of the owner so the same mistake in entering need not be made the second time.
7. The entry committee or Secretary reserves the right of refusing to accept any entry. Furthermore, they reserve the right to bar from competition vegetables, flowers, products, and manufactured articles of decidedly inferior quality and those not possessing sufficient merit to warrant recognition.
8. The fair Management may, at any time, order the removal of any exhibit in bad condition and any article unfit to show may be excluded. Food products cannot be polluted with any substance or chemical that causes them to become poisonous and unfit to be used as food.
9. Where award ribbons are stolen and destroyed, the exhibitor may receive a duplicate at the close of the Fair or show which shall be supplied by the Fair free of charge.
10. During the judging, buildings are to be closed to everyone except fair officials, judges and necessary attendants. No exhibitor or his agent shall communicate with the judge during time of determining the awards except to answer questions proposed by the judges. Any exhibitor interfering with the judges while making awards shall forfeit any premium to which he would otherwise be entitled.
11. The Fair Management may, at any time, order the removal of any exhibit in bad condition and any article unfit to show may be excluded. Food products cannot be polluted with any substance or chemical that causes them to become poisonous and unfit to be used as food.
12. Where award ribbons are stolen and destroyed, the exhibitor may receive a duplicate at the close of the Fair or show, which shall be supplied by the Fair free of charge.
13. During the judging, buildings are to be closed to everyone except fair officials, judges and necessary attendants. No exhibitor or his agent shall communicate with the judge during the time of determining the awards except to answer questions proposed by the judges. Any exhibitor interfering with the judges while making awards shall forfeit any premium to which he would otherwise be entitled.

DEPARTMENT 8

SECTION 01

EGGS

1st \$4.00 2nd \$3.00 3rd \$2.00 4th \$1.00

1. An Exhibitor may make only one entry in the following classes.
2. Eggs must be fresh (NO sign of incubation)
3. Cracked or broken egg will disqualify the entry
4. Brown and white eggs must not be mixed in carton
5. Eggs must be displayed in a standard 12 egg carton

Class 1 One Dozen Brown Eggs
Class 2 One Dozen White Eggs
Class 3 One Dozen Colored Eggs (Not Dyed)



**DEPARTMENT 10
YOUTH
SECTION 13
YOUTH VEGETABLE**

1st \$4.00 2nd \$3.00 3rd \$2.00 4th \$1.00

Class 1	Beans – Green Snap – 10 specimens	Class 11	Gourds – 3 specimens
Class 2	Beans – Yellow Snap – 10 specimens	Class 12	Herbs
Class 3	Beets – Table – 3 specimens without tops	Class 13	Onions – tops removed, unpeeled – 5 specimens
Class 4	Broccoli – 1 primary head	Class 14	Peas – 10 pods
Class 5	Cabbage – 1 specimen untrimmed	Class 15	Peppers, hot- 3 specimens
Class 6	Carrots – 5 specimens without tops	Class 16	Peppers, sweet – 3 specimens
Class 7	Corn – sweet, 5 ears, husks on	Class 17	Potatoes – 5 specimens
Class 8	Cucumbers – pickling, 8 specimens, small, under 5 inches	Class 18	Squash – any summer variety – 1 specimen
Class 9	Cucumbers – slicing, 3 specimens, over 5 inches	Class 19	Tomatoes, green – 5 specimens
Class 10	Eggplant – 1 specimen	Class 20	Tomatoes, ripe – 3 specimens
		Class 21	Any other vegetable

DEPARTMENT 10

YOUTH

SECTION 14

YOUTH FRUIT

1st \$4.00 2nd \$3.00 3rd \$2.00 4th \$1.00

- Class 1 Apples – 5 specimens
- Class 2 Peaches – 5 specimens
- Class 3 Pears – 5 specimens
- Class 4 Plums – 5 specimens
- Class 5 Berries – 1 pint, any variety
- Class 6 Grapes – 2 bunches, any variety

DEPARTMENT 10

SECTION 17

YOUTH ANNUALS (FLOWERS)

1st \$4.00 2nd \$3.00 3rd \$2.00 4th \$1.00

RULES:

1. Exhibits must be cut flowers grown by the exhibitors and must conform to the number of blooms, spikes, or stems specified in each case.
2. The uniformity of height, color, or size is an important factor in evaluating entries.
3. Flowers in each entry must be of one color and variety unless otherwise stated.

Class 15 Any other annuals

- Class 1 Asters, 6 blooms
- Class 2 Batchelor Buttons, 5 stems
- Class 3 Calendula, 6 blooms
- Class 4 Cosmos, 6 blooms
- Class 5 Dahlia, 1 bloom
- Class 6 Gladiola, 1 spike
- Class 7 Marigold, 6 blooms
- Class 8 Nasturtium, 6 blooms
- Class 9 Pansy, 6 blooms
- Class 10 Petunia, 6 blooms
- Class 11 Snapdragon, 3 spikes
- Class 12 Sweet peas, 6 stems
- Class 13 Zinnia-small, not over 2", 6 blooms
- Class 14 Zinnia-large, over 2", 3 blooms



DEPARTMENT 10

YOUTH

SECTION 18

YOUTH ANNUALS (FLOWERS)

1st \$4.00 2nd \$3.00 3rd \$2.00 4th \$1.00

Class 1	Ageratum, 3 stems	Class 5	Lilies, 1 stalk
Class 2	Chrysanthemums, 3 stems	Class 6	Roses, 3 flowers
Class 3	Delphinium, 1 spike	Class 7	Scabiosa, 6 blooms
Class 4	Dianthus, 5 blooms	Class 8	Verbenia – 5 blooms

DEPARTMENT 10

SECTION 19

YOUTH FOLIAGE PLANTS (FLOWERS)

1st \$4.00 2nd \$3.00 3rd \$2.00 4th \$1.00

Class 1	Begonias	Class 5	Ferns
Class 2	Cacti	Class 6	Geranium
Class 3	Coleus	Class 7	Ivy
Class 4	Episica	Class 8	Philodendron

DEPARTMENT 11

SECTION 02

YOUTH FOODS

(Open to boys and girls under age 19)

1st \$4.00 2nd \$3.00 3rd \$2.00 4th \$1.00

QUICK BREADS

- Class 1 Fruit or Nut Bread – one rectangular loaf, wrapped in plastic.
- Class 2 Muffins – six specimens, on disposable plate & wrapped in plastic
- Class 3 Biscuits – six specimens, on disposable plate & wrapped in plastic

YEAST BREADS & ROLLS

- Class 4 Bread, white or wheat, 1 loaf, wrapped in plastic
- Class 5 Cinnamon rolls – six specimens, on disposable plate & wrapped in plastic
- Class 6 Rolls, white or wheat – six specimens, on disposable plate & wrapped in plastic

BUTTER CAKES – 1 layer, on a disposable plate & wrapped in plastic

- Class 7 Chocolate
- Class 8 Spice
- Class 9 White
- Class 10 Yellow

CANDY – 6 specimens on a disposable plate & wrapped in plastic

- Class 11 Fudge, chocolate
- Class 12 Fudge, light
- Class 13 Peanut Brittle
- Class 14 Any other

COOKIES – 6 specimens on a disposable plate & wrapped in plastic

- Class 15 Bar
- Class 16 Dropped
- Class 17 Filled
- Class 18 Pressed
- Class 19 Rolled
- Class 20 Sliced

PIES AND TARTS

- Class 21 Tarts or Turnovers, any variety of fruit, 6 specimens on a disposable plate & wrapped in plastic
- Class 22 Two crust pie, any variety of fruit wrapped in plastic

CANNED FRUIT, SINGLE ENTRIES

- Class 23 Peaches
- Class 24 Pears
- Class 25 Red Cherries, with pits
- Class 26 White Cherries, with pits
- Class 27 Any other

CANNED VEGETABLES, SINGLE ENTRY

- Class 28 Carrots
- Class 29 Corn
- Class 30 Lima Beans
- Class 31 Peas
- Class 32 String Beans
- Class 33 Tomatoes

JELLIES, SINGLE ENTRY

- Class 34 Apple
- Class 35 Grape
- Class 36 Any other

JAMS, SINGLE ENTRY

- Class 37 Berry
- Class 38 Peach
- Class 39 Any other

PICKLES, SINGLE ENTRY

- Class 40 Sweet, whole
- Class 41 Bread and Butter
- Class 42 Dill

MISCELLANEOUS PRODUCTS

- Class 43 Potato chips 1 qt
- Class 44 Salted nuts - ½ pint

DEPARTMENT 11
SECTION 03
YOUTH ARTS AND HANDCRAFTS

(Open to boys and girls under age 12)

1st \$4.00 2nd \$3.00 3rd \$2.00 4th \$1.00

1. Each article must have been made by the exhibitor within the current year.

CLOTHING

- Class 1 Backpack
- Class 2 Blouse
- Class 3 Dress
- Class 4 Stuffed animal or toy
- Class 5 Hat or cap
- Class 6 Jacket
- Class 7 Pillow
- Class 8 Potholders
- Class 9 Purse
- Class 10 Belt
- Class 11 Shirt
- Class 12 Shorts
- Class 13 Slacks, any material
- Class 14 Skirt, any material
- Class 15 Separates, two or more pieces
- Class 16 T-Shirt
- Class 17 Tote Bag
- Class 18 Useful article, sewing only, no crafts
- Class 19 Vest

KNITTING & CROCHETING

- Class 19 Knitting, Miscellaneous Article
- Class 20 Crocheting, Miscellaneous Article

PHOTOGRAPHY

- Class 21 Black & White – 4 x 6 and smaller
- Class 22 Black & White – Over 4 x 6
- Class 23 Color – 4 x 6 and smaller
- Class 24 Color – Over 4 x 6

ARTWORK

- Class 25 Paint by Number
- Class 26 Pastel
- Class 27 Oil
- Class 28 Pen
- Class 29 Pencil
- Class 30 Acrylic
- Class 31 Crayon
- Class 32 Marker
- Class 33 Watercolor
- Class 34 Mixed Media

OTHER CRAFTS

- Class 35 Ceramics
- Class 36 String Art
- Class 37 Woodworking (small)
- Class 38 Woodworking (large)
- Class 39 Wood Engraving
- Class 40 Leather Items
- Class 41 Weaving
- Class 42 Models
- Class 43 Plastic Canvas
- Class 44 Miscellaneous Crafts

COLLECTIONS

- Class 45 Badges
- Class 46 Key Rings
- Class 47 Pencils
- Class 48 Trucks and Cars

DEPARTMENT 11
SECTION 04
YOUTH ARTS AND HANDCRAFTS

(Open to boys and girls age 12 -19)

1st \$4.00 2nd \$3.00 3rd \$2.00 4th \$1.00

1. Each article must have been made by the exhibitor within the current year.

CLOTHING

- Class 1 Backpack
- Class 2 Blouse
- Class 3 Dress
- Class 4 Stuffed animal or toy
- Class 5 Hat or cap
- Class 6 Jacket
- Class 7 Pillow
- Class 8 Potholders
- Class 9 Purse
- Class 10 Belt
- Class 11 Shirt
- Class 12 Shorts
- Class 13 Slacks, any material
- Class 14 Skirt, any material
- Class 15 Separates, two or more pieces
- Class 16 T-Shirt
- Class 17 Tote Bag
- Class 18 Useful article, sewing only, no crafts
- Class 19 Vest

KNITTING & CROCHETING

- Class 19 Knitting, Miscellaneous Article
- Class 20 Crocheting, Miscellaneous Article

PHOTOGRAPHY

- Class 21 Black & White – 4 x 6 and smaller
- Class 22 Black & White – Over 4 x 6
- Class 23 Color – 4 x 6 and smaller
- Class 24 Color – Over 4 x 6

ARTWORK

- Class 25 Paint by Number
- Class 26 Pastel
- Class 27 Oil
- Class 28 Pen
- Class 29 Pencil
- Class 30 Acrylic
- Class 31 Crayon
- Class 32 Marker
- Class 33 Watercolor
- Class 34 Mixed Media

OTHER CRAFTS

- Class 35 Ceramics
- Class 36 String Art
- Class 37 Woodworking (small)
- Class 38 Woodworking (large)
- Class 39 Wood Engraving
- Class 40 Leather Items
- Class 41 Weaving
- Class 42 Models
- Class 43 Plastic Canvas
- Class 44 Miscellaneous Crafts

COLLECTIONS

- Class 45 Badges
- Class 46 Key Rings
- Class 47 Pencils
- Class 48 Trucks and Cars

DEPARTMENT 12

GRAINS & HAY

1. Half-gallon jars with lids are to be used to show grain in Classes 4 through 7.
2. If the Fair Management believes any of the exhibits were shown in previous years, those entries may be refused.

DEPARTMENT 12

SECTION 01

GRAIN AND SEED CROPS

1st \$4.00 2nd \$3.00 3rd \$2.00 4th \$1.00

Class 1	Hybrid Corn, white or yellow (6 ears)	Class 9	Barley – 1 quart
Class 2	Field Corn (6 ears)	Class 10	Rye – 1 quart
Class 3	Popcorn (6 ears)	Class 11	Buckwheat – 1 quart
Class 4	Indian Corn (6 ears)	Class 12	Clover – 1 quart
Class 5	Sunflowers – 1 head, may be dried	Class 13	Timothy – 1 quart
	Class 6 Oats – 1 quart	Class 14	Sunflower Seeds – 1 quart
Class 7	Wheat – 1 quart	Class 15	Shelled Corn – 1 quart
Class 8	Soybeans – 1 quart		

DEPARTMENT 12

SECTION 02

HAY

1st \$4.00 2nd \$3.00 3rd \$2.00 4th \$1.00

Long hay only (an exhibit shall consist of a bale section approximately 8” thick)

- | | |
|---------|--|
| Class 1 | Alfalfa or alfalfa grass mixed, first cutting not over 50% grasses |
| Class 2 | Alfalfa or alfalfa grass mixed, later cutting not over 50% grasses |
| Class 3 | Other legumes or legume grass mixtures not over 50% grasses |
| Class 4 | Grass, first cutting mixtures of timothy and or other grasses and containing not more than 10% legumes |
| Class 5 | Grass, second cutting mixtures of timothy and or other grasses, and containing not more than 10% legumes |
| Class 6 | Mixed hay - any mixture not classified in the previous classes, but which contains 50% or more single or in combination of alfalfa, timothy, clover, and grasses |
| Class 7 | Summer annual grasses - Sudan grass, Sorghum Sudan, hybrids, etc. |

DEPARTMENT 12

SECTION 03

SILAGE

1st \$4.00 2nd \$3.00 3rd \$2.00 4th \$1.00

Silage - Crop must be named. Exhibits consist of 10 pounds of silage large size plastic bags are excellent containers for transporting or showing samples.

- Class 1 Perennial crops, direct cut, with or without preservatives
- Class 2 Perennial crops, wilted or low moisture with or without preservatives
- Class 3 Annuals other than corn, direct cut, with or without preservatives
- Class 4 Annuals other than corn - wilted or low moisture with or without preservatives
- Class 5 Corn Silage

DEPARTMENT 12

SECTION 04

BROOM CORN

1st \$4.00 2nd \$3.00 3rd \$2.00 4th \$1.00

Brooms - each exhibit consists of 3 brooms made of broom corn grown within the designated area

- Class 1 Broom Corn - 1 bundle
- Class 2 Standard
- Class 3 Whisk

DEPARTMENT 13

SECTION 01

VEGETABLES

1st \$4.00 2nd \$3.00 3rd \$2.00 4th \$1.00

RULES AND REGULATIONS

1. In selecting vegetables for exhibition, we chose such specimens that would bring the highest market price. Do not SELECT the largest, select medium size specimens. If possible, do not mix varieties.
2. The following factors are generally USED BY an expert vegetable judge:
 - A. Trueness to variety type. If possible, pick the specimens from one variety.
 - B. Uniformity in shape, size, and color
 - C. Be sure to pick out a perfect specimen, then select the others as similar to it as possible. Never mix specimens of different maturity.
 - D. Protect from dirt, infection, and mechanical damage. Select specimens that are perfect and show no blemishes of any kind.
 - E. Condition and maturity. Be sure that exhibits are of high quality.
 - F. Potatoes should not be washed. Remove soil using a soft cloth or brush.
 - G. Tomatoes should have stem removed. Carrots, beets (etc.) should have tops (leaves) removed from vegetables leaving about (2) two inches of stem.
3. Read premium material carefully following all rules and regulations. If any entry calls for 5 specimens, be sure to exhibit that number; do not enter 4 or 6. In any instance, your exhibits will be disqualified if the incorrect number of specimens is entered.

DEPARTMENT 13 SECTION 01 (CONT'D)

VEGETABLES

BEANS

- Class 1 Beans, Dry Shelled - 1 pint
- Class 2 Beans, Green Shelled - 1 pint

BEANS, SNAP, BUSH TYPES - 10

SPECIMENS

- Class 3 Green Pods
- Class 4 Wax Pods

BEANS, SNAP, POLE TYPES – 10

SPECIMENS

- Class 5 Green Pods
- Class 6 Yellow Pods

BEETS – 5 SPECIMENS, TOPPED

- Class 7 Half Long
- Class 8 Long Lutz
- Class 9 Mangels
- Class 10 Broccoli—1 large head
- Class 11 Brussels Sprouts (1 pt.)

CABBAGE

- Class 12 Chinese Types
- Class 13 Domestic Round
- Class 14 Red

CARROTS

- Class 15 Half Long (pointed)
- Class 16 Half Long (stump-rooted)
- Class 17 Cauliflower – 1 head

CORN

- Class 18 Yellow hybrids
- Class 19 Other Types

CUCUMBERS 5 SPECIMENS

- Class 20 Pickling (under 3")
- Class 21 Pickling (3" to 5")
- Class 22 Slicing (over 5")

EGGPLANT

- Class 23 Eggplant 1 specimens

ENDIVE

- Class 24 Broad leafed
- Class 25 Green Curled

GARLIC

- Class 26 Standard
- Class 27 Elephant

LETTUCE – 1 PLANT IN SOIL

- Class 28 Crisp Head Types
- Class 29 Leaf Types
- Class 30 Spinach

ONIONS – 5 SPECIMENS, UNPEELED

- Class 31 White Globe
- Class 32 Yellow Globe
- Class 33 Red Globe
- Class 34 Green bunching (4 specimens)

PARSNIPS – 5 SPECIMENS, TOPS OFF

- Class 35 All American
- Class 36 Model
- Class 37 Peas- pods (1pt.)

PEPPERS (HOT) 5 SPECIME

- Class 38 Long
- Class 39 Round
- Class 40 Small

PEPPERS (SWEET) 5 SPECIMENS

- Class 41 Green
- Class 42 Yellow

POTATOES 5 SPECIMENS

- Class 43 Chippewa
- Class 44 Irish Cobbler
- Class 45 Katahdin
- Class 46 Kennebec
- Class 47 Russet – Rural
- Class 48 Any other
- Class 49 Potatoes (sweet)

PUMPKINS

- Class 50 Connecticut (field) 1 specimen
- Class 51 Small sugar (pie) 1 specimen
- Class 52 Largest field pumpkin

RADISHES

- Class 53 Small round – 5 specimens
- Class 54 White Icicle – 5 specimens

DEPARTMENT 13 SECTION 01 (CONT'D)

VEGETABLES

RHUBARD

Class 55 Any variety – 3 stalks tied together

RUTABAGAS

Class 56 Any variety – 3 specimens, topped

SQUASH (Summer Types) 1 Specimen

Class 57 Bush Scallop – Patty Pa

Class 58 Cocozelle or Zucchini

Class 59 Crookneck

Class 60 Straightneck

SQUASH (Winter Types) 1 Specimen

Class 61 Acorn – Table Queen

Class 62 Buttercup

Class 63 Butternut

Class 64 Hubbard

TOMATO (Large Fruited) 3 Specimens

Class 65 Mature Green

Class 66 Red

Class 67 Yellow

TOMATOES (Small Fruited)

Class 68 Cherry – 10 specimens

Class 69 Husk

Class 70 Pear

Class 71 Plum

Class 72 Turnips – 3 specimens

MARKET BASKET

Class 73 5 or more kinds of vegetables

GOURDS

Class 74 Mixed – 5 specimens

Class 75 Collection – 6 or more kinds

Class 76 Asparagus

Class 77 Swiss Chard

Class 78 Kale

Class 79 Kohlrabi

PARSLEY

Class 80 Curled

Class 81 Plain - 2 bunches

HERBS

Class 82 Dill

Class 83 Mint

Class 84 Other

VEGETABLE DRESS UP

Class 85 Mix or match vegetables, clothe them, paint them, etc.

Vegetables may be store-bought

Class 86 Vegetable Freaks

DEPARTMENT 14

FRUITS – NUTS

1st \$4.00 2nd \$3.00 3rd \$2.00 4th \$1.00

RULES AND REGULATIONS

1. In selecting fruit for exhibition, choose specimens that would bring the highest market price. Do not select the largest. Select medium size. In plate displays select five specimens as nearly alike as possible.
2. The following score is to be used as a basis for the judging of all exhibits.

Exterior Quality

Size (Total Weight)	16 points
Uniformity of Color	12 points
Uniformity of Shape	12 points
Shell Texture	12 points
Condition	12 points

Interior Quality

Total	100 points
-------	------------

3. Each exhibitor must designate the particular premium for which he is competing in special cases and see that the packages are properly tagged. Single specimens may not be considered or shown in variety classes.
4. Premiums will be awarded only when the exhibit complies with the standard, is meritorious, and is properly named.

DEPARTMENT 14

SECTION 01

APPLES

PLATE OF 5

1st \$4.00 2nd \$3.00 3rd \$2.00 4th \$1.00

APPLES - COMMERCIAL VARIETIES

Class 1	Cortland
Class 2	Crabapples
Class 3	Red Delicious
Class 4	Golden Delicious
Class 5	Grimes Golden
Class 6	Jonathan
Class 7	Maiden Bush
Class 8	McIntosh
Class 9	Rome
Class 10	Stayman
Class 11	Summer Rambo
Class 12	Winesap
Class 13	Yellow Transparent
Class 14	York
Class 15	Bushel Basket, any variety

APPLES - OTHER VARIETIES

Class 16	Baldwin
Class 17	Beacon
Class 18	Ida Red
Class 19	Lodi
Class 20	Macoun
Class 21	Northern Spy
Class 22	Opalescent
Class 23	Ruby
Class 24	Smokehouse
Class 25	Spartan
Class 26	Spigold
Class 27	Bushel basket any variety
Class 28	Any other

DEPARTMENT 14
SECTION 03
PEACHES PLATE OF 5

1st \$4.00 2nd \$3.00 3rd \$2.00 4th \$1.00

PEACHES

Class 1	Belle of Georgia	Class 4	Halehaven
Class 2	Elberta	Class 5	Redhaven
Class 3	Golden Jubilee	Class 6	Largest single peach by WT.

DEPARTMENT 14
SECTION 04

PEARS

PLATE OF 5

1st \$4.00 2nd \$3.00 3rd \$2.00 4th \$1.00

PEARS

Class 1 Single Plates, five of any variety

DEPARTMENT 14
SECTION 05

PLUMS

PLATE OF 5

1st \$4.00 2nd \$3.00 3rd \$2.00 4th \$1.00

PLUMS

Class 1 Single Plates, five of any variety

DEPARTMENT 14
SECTION 08
FRUIT FANCY BASKETS

1st \$4.00 2nd \$3.00 3rd \$2.00 4th \$1.00

Class 1 Assorted native fruit, any kind

DEPARTMENT 14

SECTION 09

BERRIES

1st \$4.00 2nd \$3.00 3rd \$2.00 4th \$1.00

SINGLE PLATE OR BASKET

Class 1	Blackberries	Class 5	Raspberry Red
Class 2	Blueberries	Class 6	Raspberry Black
Class 3	Currant	Class 7	Strawberry
Class 4	Gooseberry	Class 8	Display of five or more varieties

DEPARTMENT 14

SECTION 11

GRAPES

1st \$4.00 2nd \$3.00 3rd \$2.00 4th \$1.00

PLATE, TWO BUNCHES

Class 1	Concord
Class 2	White - Niagara
Class 3	White - Delaware
Class 4	Any Others
Class 5	Fancy basket assorted grapes

DEPARTMENT 14

SECTION 12

EDIBLE NUTS

1st \$4.00 2nd \$3.00 3rd \$2.00 4th \$1.00

Class 1	American black or English walnuts
Class 2	Butternuts, any variety
Class 3	Hazelnuts
Class 4	Heartnuts
Class 5	Hicans
Class 6	Peanuts
Class 7	Pecans
Class 8	Chestnuts
Class 9	Hickory
Class 10	Any other named nuts not listed

DEPARTMENT 15
HOME AND DAIRY PRODUCTS

1. To be judge on flavor, lightness, general appearance, and crumb.
2. Only classes listed will be accepted.
3. All products must have been made by exhibitor.
4. Complete baked goods must be brought to the fair. After judging, the fair will display only a portion of the product for the week.
5. Baked goods must be on paper plates and covered with plastic wrap.
6. Yeast rolls, cookies, muffins - must be (6) on paper plates wrapped in plastic

DEPARTMENT 15
SECTION 01
BAKED PRODUCTS

1st \$4.00 2nd \$3.00 3rd \$2.00 4th \$1.00

BREADS – 1 LOAF, WRAPPED IN PLASTIC

- Class 1 Date Bread
- Class 2 Nut Bread
- Class 3 Rye Bread
- Class 4 White Bread
- Class 5 Whole Wheat Bread
- Class 6 Any Others

ROLLS – 6 ROLLS WRAPPED IN PLASTIC

- Class 7 Biscuits
- Class 8 Cinnamon Rolls
- Class 9 Doughnuts
- Class 10 Muffins
- Class 11 White Rolls
- Class 12 Whole Wheat Rolls
- Class 13 Nut Rolls
- Class 14 Pizza Rolls
- Class 15 Basket of Fancy Rolls to contain at least 3 different shapes

BUTTER CAKES – ICED

- Class 16 Chocolate
- Class 17 Spice
- Class 18 White
- Class 19 Yellow
- Class 20 Any other kind
- Class 21 Best Decorated

EGG CAKES – NOT ICED

- Class 22 Angel Food
- Class 23 Chiffon
- Class 24 Sponge

SPECIAL CAKES

- Class 25 Birthday
- Class 26 Special Occasion
- Class 27 Cupcakes

PIES

- Class 28 Blackberry
- Class 29 Cherry
- Class 30 Peach
- Class 31 Raisin
- Class 32 Pecan
- Class 33 Any Other Kind
- Class 34 Cobbler

CANDY – 6 SPECIMENS

- Class 35 Chocolate-covered
- Class 36 Chocolate Fudge
- Class 37 Divinity Fudge
- Class 38 Fondant
- Class 39 Peanut Butter Fudge
- Class 40 Sea Foam
- Class 41 Molded Chocolate

DEPARTMENT 15 SECTION 01 (CONT'D)
BAKED PRODUCTS

COOKIES – 6 SPECIMENS

- Class 42 Bar Cookies
- Class 43 Dropped Cookies
- Class 44 Filled Cookies
- Class 45 Decorated Cookies
- Class 46 Rolled Cookies
- Class 47 Sliced or Ice Box Cookies

MISCELLANEOUS HOME PRODUCTS

- Class 48 Noodles – 1 qt.
- Class 49 Potato Chips – 1 qt.
- Class 50 Salted nuts - ½ pt.
- Class 51 Other

DEPARTMENT 15

SECTION 02

CANNED OR DRIED PRODUCTS

1st \$4.00 2nd \$3.00 3rd \$2.00 4th \$1.00

1. Canned fruits and vegetables judged on quality, general appearance and container which shall be standard canning jar, one quart or one pint jar, with new lid or cover with bands not removed.
2. Canned vegetables - 1 qt. or 1 pt. jar of vegetables, to be judged on quality and general appearance

CANNED FRUITS

- Class 1 Apples
- Class 2 Applesauce
- Class 3 Apricots
- Class 4 Blackberries
- Class 5 Blueberries or Huckleberries
- Class 6 Cherries, white with pits
- Class 7 Cherries, dark with pits
- Class 8 Cherries, red with pits
- Class 9 Cherries, red, sour, pitted
- Class 10 Currants
- Class 11 Elderberries
- Class 12 Grapes
- Class 13 Peaches
- Class 14 Pears
- Class 15 Plums
- Class 16 Raspberries, Black
- Class 17 Raspberries, Red
- Class 18 Rhubarb
- Class 19 Other
- Class 20 Best display - 3 jars

CANNED VEGETABLES

- Class 21 Asparagus
- Class 22 Beans, Green
- Class 23 Beans, Lima
- Class 24 Beans, Yellow
- Class 25 Beans, shelled
- Class 26 Beets tops
- Class 27 Beets
- Class 28 Broccoli
- Class 29 Cabbage
- Class 30 Carrots
- Class 31 Cauliflower
- Class 32 Corn
- Class 33 Dandelion
- Class 34 Endive
- Class 35 Mixed Vegetable
- Class 36 Peas
- Class 37 Potatoes
- Class 38 Pumpkin
- Class 39 Sauerkraut
- Class 40 Spinach
- Class 41 Succotash
- Class 42 Swiss Chard
- Class 43 Tomatoes Red
- Class 44 Tomatoes Green
- Class 45 Tomatoes Yellow
- Class 46 Tomato Soup
- Class 47 Vegetable Soup
- Class 48 Best display - 3 jars

DEPARTMENT 15, SECTION 02 (CONT'D)

CANNED OR DRIED PRODUCTS

CANNED MEATS

- Class 49 Beef
- Class 50 Chicken
- Class 51 Venison
- Class 52 All Others

- Class 77 Salsa
- Class 78 Any Other Sauce

PICKLES AND RELISHES - 1 qt. or 1 pt. jar, to be judged on size, uniformity, clearness, color, and arrangement.

- Class 53 Beans
- Class 54 Beets
- Class 55 Cauliflower
- Class 56 Chow - Chow
- Class 57 Cranberry
- Class 58 Cucumber - Bread and Butter
- Class 59 Cucumber -Dill
- Class 60 Cucumber - Mixed
- Class 61 Cucumber -Mustard
- Class 62 Cucumber -Sour
- Class 63 Cucumber -Sweet
- Class 64 Onions
- Class 65 Peppers
- Class 66 Zucchini
- Class 67 Piccalilli
- Class 68 Miscellaneous

RELISHES

- Class 69 Corn
- Class 70 Pepper
- Class 71 Miscellaneous

SAUCES

- Class 72 Catsup
- Class 73 Chili Sauce
- Class 74 Spaghetti Sauce
- Class 75 Tomato Sauce
- Class 76 Pizza Sauce

SPICED FRUITS

- Class 79 Apples
- Class 80 Crabapples
- Class 81 Peaches
- Class 82 Pears
- Class 83 Watermelon

DRIED FRUITS AND VEGETABLES - 1 qt. or 1 pt. jar, to be judged on quality and general appearance.

- Class 84 Apples
- Class 85 Beans, Lima
- Class 86 Beans, Navy
- Class 87 Beans, String
- Class 88 Corn
- Class 89 Peaches
- Class 90 Pears
- Class 91 Plums
- Class 92 Soybeans
- Class 93 Other

JUICES - 1 qt. or 1 pt. jar, to be judged on flavor color and clarity.

- Class 94 Apple
- Class 95 Grape
- Class 96 Tomato
- Class 97 Other

VINEGARS - 1 qt. or pt. jar

- Class 98 Fruit
- Class 99 Herb
- Class 100 Other

DEPARTMENT 15

SECTION 03

DRIED HERBS

1st \$4.00 2nd \$3.00 3rd \$2.00 4th \$1.00

- Class 1 Parsley
- Class 2 Chives
- Class 3 Basil
- Class 4 Celery

DEPARTMENT 15

SECTION 04

**BUTTERS, HONEY, SPREADS, JAMS,
JELLIES, MARMALADES, AND PRESERVES**

1st \$4.00 2nd \$3.00 3rd \$2.00 4th \$1.00

One standard jelly glass or canning jar with removable lid. Judged on appearance, consistency, and neatness of package. Exhibits must be prepared by exhibitor. No jelly jars to be opened.

BUTTERS

- Class 1 Apple
- Class 2 Peach
- Class 3 Pear
- Class 4 Plum
- Class 5 Other
- Class 6 Display of Butters - 3 varieties

JAMS

- Class 7 Blackberry
- Class 8 Cherry
- Class 9 Cranberry
- Class 10 Currant
- Class 11 Elderberry
- Class 12 Peach
- Class 13 Plum
- Class 14 Raspberry, black
- Class 15 Raspberry, red
- Class 16 Rhubarb
- Class 17 Strawberry
- Class 18 Any Other
- Class 19 Display of jams - 3 varieties

JELLIES

- Class 20 Apple
- Class 21 Blackberry
- Class 22 Cherry
- Class 23 Crabapple
- Class 24 Currant
- Class 25 Elderberry
- Class 26 Grape
- Class 27 Peach
- Class 28 Plum
- Class 29 Raspberry, black
- Class 30 Raspberry, red
- Class 31 Any Other
- Class 32 Display of jelly - 3 varieties

MARMALADES

- Class 33 Apricot
- Class 34 Orange
- Class 35 Peach
- Class 36 Pear
- Class 37 Pineapple
- Class 38 Any Other
- Class 39 Display of marmalades - 3 varieties

PRESERVES OR CONSERVES

- Class 40 Apricot
- Class 41 Blueberry
- Class 42 Cherry
- Class 43 Peach
- Class 44 Plum
- Class 45 Strawberry
- Class 46 Tomato
- Class 47 Any Other
- Class 48 Display of Preserves or Conserves

DEPARTMENT 16
CHRISTMAS TREES

1st \$25 2nd \$20

1. Trees for competitive exhibits must have been grown in the community on land owned or operated by the exhibitor.
2. Trees to be exhibited shall be within the 5 to 7 feet height range measuring from the bottom of the handle to the top of the tip.
3. No trees may be exhibited that have been sprayed with or have artificial color or other chemicals added in any manner.
4. No trees may be exhibited with limbs or foliage added that did not grow naturally in place.
5. Trees may be naturally grown or shared and shaped by the exhibitor.
6. Entries must have tag attached to the SHOW IN name and address of exhibitor and the class number in which trees are to be exhibited.
7. Only one tree may be entered in each class by exhibitor.
8. No premium will be awarded in any class unless the exhibits are worthy.
9. Judges may eliminate any tree which is unqualified.
10. No holders should accompany trees. All trees will be supported in like manner.

Class 1 Concolor Fir
Class 2 Douglas Fir
Class 3 Red Pine
Class 4 Scotch Pine
Class 5 Spruce, Blue

Class 6 Spruce, Norway
Class 7 Spruce, White
Class 8 White, Pine
Class 9 Fraser Fur

DEPARTMENT 17
FLORAL EXHIBITS

1. Only one entry in each class division is permissible per person per class. Only one (1) premium will be paid to the exhibitor in each class.
2. The use or display of artificial flowers is prohibited, and no premium will be paid.
3. Plants will not be accepted for exhibition unless they have been growing in containers for two months.
4. The management will not undertake to return exhibits nor be responsible for the return of exhibits. Baskets or containers must be supplied by exhibitors and will be given every possible care, but the management assumes no responsibility for their safety.
5. Flowers or plants entered for competition must be more than ordinary standard and quality to be entitled to an award.
6. The management may at any time order the removal of any exhibit that is in bad condition. Any article manifestly unfit to show may be excluded.
7. All entries must be grown by exhibitors except in arrangement classes.
8. No exhibit may be removed at any time before the closure of the exhibition except by consent of management.
9. During judging only, the judges and such officials as may be necessary will be permitted in the judging area. Anyone violating this rule will forfeit all premiums they may have earned.
10. The judge may withhold awards where he feels the entry is not worthy.
11. The judge's decision will be final.

The class includes all plants that would qualify as houseplants. Only 1 species per pot, except in the collection class. Pots not to exceed 12" in width, and plants must be growing in said containers 2 months prior to the fair.

DEPARTMENT 17

SECTION 01

FLOWERING HOUSE PLANTS

	1 st \$4.00	2 nd \$3.00	3 rd \$2.00	4 th \$1.00
Class 1	African Violets – any color			
Class 2	Geranium			
Class 3	Begonias			
Class 4	Any other flowering houseplant not mentioned above			

DEPARTMENT 17

SECTION 02

FOLIAGE HOUSE PLANTS

1st \$4.00	2nd \$3.00	3rd \$2.00	4th \$1.00
------------	------------	------------	------------

BEGONIAS, FOLIAGE TYPE, WITH OR WITHOUT FLOWERS

- Class 1 Large leaf, any variety
- Class 2 Small leaf, any variety

CACTI

- Class 3 Small under 6 inches
- Class 4 Large over 6 inches
- Class 5 3 specimens one pot

FERNS

- Class 6 Asparagus
- Class 7 Boston
- Class 8 Any other variety

COLEUS

- Class 9 Fancy Leaf
- Class 10 Fringe type
- Class 11 Largest pot of Coleus

GERANIUM

- Class 12 Ivy, any variety
- Class 13 Scented, any variety
- Class 14 Variegated foliage

POTTED IVY

- Class 15 English
- Class 16 Any other variety
- Class 17 Philodendron
- Class 18 Wandering Jew
- Class 19 Jade Plant

DEPARTMENT 17
SECTION 03
SPECIMEN FLOWERS - ANNUALS

1st \$4.00 2nd \$3.00 3rd \$2.00 4th \$1.00

1. Exhibits in this division must be cut flowers grown by the exhibitor and must conform to the number of blooms, spikes, or stems specified in each class.
2. The uniformity of height, color, or size is an important factor in evaluating entries.
3. Flowers in each entry must be of 1 color and variety unless otherwise stated.

- Class 1 Ageratum - 5 stems, 3" long or longer
- Class 2 Asters - 6 blooms
- Class 3 Bachelor Button
- Class 4 Bells of Ireland - 5 stems
- Class 5 Calendula - 6 blooms
- Class 6 Celosia Crested, 1 stem
- Class 7 Celosia Decorative, 1 bloom
- Class 8 Cleona (Spider Flower) - 5 stems
- Class 9 Cosmos - 5 blooms
- Class 10 Dahlia Cactus, 1 bloom
- Class 11 Dahlia Decorative, 1 bloom
- Class 12 Dahlia Pom Poms
- Class 13 Dahlia Gaillardia - 6 blooms
- Class 14 Dahlia Gladiolus - 1 spike
- Class 15 Marigold Large Flower
- Class 16 Marigold Small Flower
- Class 17 Nasturtiums
- Class 18 Pansy
- Class 19 Petunia Single
- Class 20 Petunia Double
- Class 21 Salvia
- Class 22 Snapdragons
- Class 23 Strawflower, mixed colors
- Class 24 Sweet Peas, mixed colors
- Class 25 Tuberous Rooted Begonia
- Class 26 Verbenia
- Class 27 Zinnia Giant
- Class 28 Zinnia Pom Pom
- Class 29 Zinnia Any Other
- Class 30 Any Other Annuals

DEPARTMENT 17
SECTION 04
SPECIMEN FLOWERS - PERENNIALS

1st \$4.00 2nd \$3.00 3rd \$2.00 4th \$1.00

1. Exhibits in this division must be cut flowers grown by the exhibitor and must conform to the number of blooms, spikes, or stems specified in each class.
2. The uniformity of height, color, or size is an important factor in evaluating entries.
3. Flowers in each entry must be of one color and variety unless otherwise stated.

Class 1 Delphinium, 1 spike
Class 2 Dainthus (hardy pinks)
Class 3 Lilies, 1 stalk
Class 4 Day Lilies, 1 stalk

ROSES

Class 5 Bi-color
Class 6 Orange
Class 7 Pink
Class 8 Red
Class 9 White

OTHER

Class 10 Sweet Peas
Class 11 Any Other Perennials

DEPARTMENT 17
SECTION 05
ARTISTIC ARRANGEMENTS

1st \$4.00 2nd \$3.00 3rd \$2.00 4th \$1.00

Maximum care will be taken of the containers and accessories until they can be reclaimed by exhibitors, but the fair cannot be held responsible for any damage or loss.

Class 1 Arrangement of wildflowers, no plants forbidden but conservation rules may be used.
Class 2 Arrangement using dried materials
Class 3 Arrangement in pedestal container
Class 4 Fruit and/or vegetable arrangement with or without foliage
Class 5 Arrangement depicting Pennsylvania history or natural history
Class 6 Arrangement featuring a candle
Class 7 Arrangement using 1 flower only; foliage and or accessories permitted.
Class 8 All white arrangement; foliage permitted
Class 9 Arrangement of foliage; no flowers
Class 10 Nosegays, small arrangements, not to exceed 5" in height.
Class 11 Arrangement in a bottle
Class 12 Miniature small arrangements not to exceed 3" in height.
Class 13 Corsage, live flowers
Class 14 Arrangement for Teacher's Desk - Children 12 and under
Class 15 Wildflower arrangement - Children 12 and under
Class 16 Terrarium - Children 12 and under.

DEPARTMENT 17
SECTION 07
HANGING BASKETS

	1 st \$4.00	2 nd \$3.00	3 rd \$2.00	4 th \$1.00
Class 1	Flowering foliage			
Class 2	Foliage			

DEPARTMENT 17
SECTION 08
LARGEST SPECIMENS OF THE
FOLLOWING ANNUALS OR PERENNIALS

	1 st \$4.00	2 nd \$3.00	3 rd \$2.00	4 th \$1.00
Class 1	Largest Dahlia in diameter			
Class 2	Longest Gladiolus from bottom flower to tip			
Class 3	Largest Marigold in diameter			
Class 4	Largest Zinnia in diameter			
Class 5	Largest Rose in diameter			
Class 6	Largest Sunflower			

DEPARTMENT 18 NEEDLECRAFT

1. No article can compete in more than 1 entry; that is, an article can be judged but once.
2. All articles must be laundered and ironed.
3. Each exhibit to be judged on workmanship; worth, and design.
4. Chairperson may reject all items made before last year's fair.
5. Only 1 entry per person per class
6. Only 1 premium will be paid to exhibitor in each class.

Plain Sewing - Garments to be judged on:

1. Worth of article
2. Materials and trimmings, appropriateness, quality
3. Workmanship - method of construction choice and execution of stitches.

Dressmaking - Simple, casual dresses, shirtwaist, or skirt, simple school dress for girl to be judged on:

1. Material - its appropriateness, quality, color and design.
2. Design - simplicity of line, harmony of color, appropriateness.
3. Workmanship - method of construction, choice and execution of stitches

Embroidery and Crocheting - Simple designs and edges for trimming to be judged on:

1. Worth of article
2. Material - appropriateness and suitability for use for which it was made.
3. Design - simplicity and appropriateness.
4. Workmanship

Knitting - to be judged on:

1. Worth of article
2. Workmanship - execution of stitches, perfection.

DEPARTMENT 18

SECTION 01

CLOTHING

1st \$4.00 2nd \$3.00 3rd \$2.00 4th \$1.00

Class 1 Creative

CHILDRENS GARMENTS

- Class 2 Outfit, Infant
- Class 3 Outfit, age 1-6
- Class 4 Outfit, age 6-12
- Class 5 Coat or Jacket
- Class 6 Blouse or Shirt
- Class 7 Sleepwear
- Class 8 Costume
- Class 9 Other Child's wearable not listed

DRESSES (one or two piece)

- Class 10 Cotton or cotton blend
- Class 11 Other Fabric Dress
- Class 12 Formal dress (long or short)
- Class 13 Jumper
- Class 14 Suit (any fabric)

SKIRTS AND BLOUSES

- Class 15 Cotton or cotton blend shirt/blouse
- Class 16 Silk or silky fabric shirt/blouse
- Class 17 Man's Shirt
- Class 18 Cotton or Cotton Blend Skirt
- Class 19 Other Fabric Skirt
- Class 20 Casual Wear
- Class 21 Jacket (any fabric)
- Class 22 Slacks (any fabric)
- Class 23 Adult Sleepwear
- Class 24 Holiday Apparel
- Class 25 Adult Costume
- Class 26 Hats (any fabric)

VESTS

- Class 27 Preprinted Fabric
- Class 28 Original Design

OTHER

- Class 29 Any other garment not listed

DEPARTMENT 18

SECTION 02

NEEDLEWORK

1st \$4.00

2nd \$3.00

3rd \$2.00

4th \$1.00

AFGHANS

- Class 1 Creative
- Class 2 Crochet
- Class 3 Fisherman
- Class 4 Granny
- Class 5 Knitted
- Class 6 Ripple
- Class 7 Shell
- Class 8 Woven
- Class 9 Baby
- Class 10 All Others

DOILIES, UNDER 12"

- Class 11 Crochet
- Class 12 Embroidered
- Class 13 Knitted
- Class 14 Solid Tatting
- Class 15 Woven
- Class 16 All Others

DOILIES, OVER 12"

- Class 17 Crochet
- Class 18 Embroidered
- Class 19 Knitted
- Class 20 Solid Tatting
- Class 21 Woven
- Class 22 All Others
- Class 49 Sweater, Cap, and Bootie set -
Knit
- Class 50 Hat - Crocheted
- Class 51 Hat - Knitted
- Class 52 Neck Scarf and Hat - Crocheted
- Class 53 Neck Scarf and Hat - Knitted

NEEDLEWORK (Pictures must be ready to hang with eye screws and picture wire)

- Class 54 Pictures – Counted Cross Stitch
- Class 55 Pictures – Needlepoint
- Class 56 Pictures – Embroidery
- Class 57 Pictures – Other Stitching
- Class 58 Useable item not eligible for
other Class – Cross Stitch
- Class 59 Useable item not eligible for
other Class – Needlepoint
- Class 60 Useable item not eligible for
other Class – Other Stitching

PILLOWCASES

- Class 61 Crocheted Edge
- Class 62 Embroidered
- Class 63 Cross Stitch
- Class 64 Textile Painted

QUILTS

- Class 65 Applique
- Class 66 Pieced
- Class 67 Embroidered
- Class 68 Crib Quilt
- Class 69 Machine Made
- Class 70 Quilt Block (12 x 12)
- Class 71 All Others

TABLE SCARVES & RUNNERS

- Class 72 Crochet edge
- Class 73 Crochet solid
- Class 74 Hand embroidered (including
cross stitch patterns)
- Class 75 Machine embroidered
- Class 76 Quilted
- Class 77 All Others

DEPARTMENT 18

SECTION 02

NEEDLEWORK

1st \$4.00 2nd \$3.00 3rd \$2.00 4th \$1.00

TABLECOTHS & RUNNERS (LARGER THAN 36" X 36")

- Class 78 Crochet edge
- Class 79 Crochet Solid
- Class 80 Embroidered
- Class 81 Tatting Edge
- Class 82 Textile Painting
- Class 83 Cross Stitch
- Class 84 Candle wicking
- Class 85 All Others

TOWELS

- Class 86 Crochet Edge
- Class 87 Embroidered
- Class 88 Painted
- Class 89 Tatting Edge
- Class 90 Miscellaneous Needlework

PLASTIC CANVAS

- Class 91 Decorative Items
- Class 92 Tissue boxes
- Class 93 Other

WEARABLE ART- CLOTHING ONLY (NO KNITTING OR CROCHETING)

- Class 94 Embroidered by Hand
- Class 95 Embroidered by Machine
- Class 96 Appliqued – Sewn Only

WEARABLE ART – ACCESSORIES (NO KNITTING OR CROCHETING)

- Class 97 Belts
- Class 98 Scarves
- Class 99 Other
- Class 100 Wearable Art – Knitting & Crocheting

DEPARTMENT 18

SECTION 04

RUGS

1st \$4.00

2nd \$3.00

3rd \$2.00

4th \$1.00

BRAIDED

Class 1 Cotton

Class 2 Man-made Fibers

Class 3 Wool

CROCHET

Class 4 Cotton

Class 5 Man-made Fibers

Class 6 Wool

HOOKED

Class 7 Cotton

Class 8 Man-made Fibers

Class 9 Wool

KNITTED

Class 10 Cotton

Class 11 Man-made Fibers

Class 12 Wool

KNOTTED OR LATCHED

Class 13 Cotton

Class 14 Man-made Fibers

Class 15 Wool

WOVEN

Class 16 Cotton

Class 17 Man-made Fibers

Class 18 Wool

DEPARTMENT 19
ART - PHOTOGRAPHY - CRAFTS

SECTION 01
PAINTINGS AND DRAWINGS

1. Painting must have been done by exhibitor. "Original" MEANS NOT COPIED.
2. Only 1 entry per person, per class.
3. Name, address, telephone number and date must be fastened on back of painting
4. Painting must be ready to hang. The exhibit must have wire or proper hooks for hanging.
String, scotch tape, or masking tape is not acceptable.
5. All entries must have been completed within the past year.
6. It is preferred that the name of the exhibitor does not show on the front of the exhibit.
7. Entries are to be displayed at owner's risk. The fair cannot be responsible for loss or damage.
8. All entries must be from current year.

1st \$4.00 2nd \$3.00 3rd \$2.00 4th \$1.00

ACRYLIC

- Class 1 Fruit or Floral
- Class 2 People or Animals
- Class 3 Scenic
- Class 4 Other

CHARCOAL

- Class 5 Charcoal

OIL (ORIGINAL)

- Class 6 Animals
- Class 7 Portrait
- Class 8 Scenes
- Class 9 Still Life
- Class 10 Other
- Class 11 Paint by Number
- Class 12 Pastels

PEN & INK

- Class 13 Black & White
- Class 14 Colored

PENCIL

- Class 15 Lead
- Class 16 Colored

WATERCOLOR (ORIGINAL)

- Class 17 Scenic
- Class 18 Still Life
- Class 19 Other
- Class 20 Any Other Medium

**DEPARTMENT 19
SECTION 02
PHOTOGRAPHY**

1st \$4.00 2nd \$3.00 3rd \$2.00 4th \$1.00

PHOTOGRAPHY BLACK & WHITE

- Class 1 Animals
- Class 2 Flowers
- Class 3 People
- Class 4 Scenic

PHOTOGRAPHY COLORED

- Class 5 Animals
- Class 6 Flowers
- Class 7 People
- Class 8 Scenic

**OLD TREASURES (ANY OLD
PICTURES OR REPRODUCTIONS)**

- Class 9 10-30 Years Old
- Class 10 Over 30 Years Old

**SINGLE SCRAPBOOK PAGE WITH
PAGE PROTECTOR**

- Class 11 Animals
- Class 12 Flowers
- Class 13 People
- Class 14 Scenic

DEPARTMENT 19
SECTION 03
HANDCRAFTS

1st \$4.00 2nd \$3.00 3rd \$2.00 4th \$1.00

1. This section includes articles made of wax, leather, cone, bead, and shell.
2. All exhibits must have been made by the exhibitor - no commercial articles accepted.
3. "Traditional" means authentic reproduction.
4. Ceramic and plastercraft articles should bear identification marks indicating they are originals.

BEAD

Class 1 Beadwork (No cross-stitch pictures)

CERAMICS

Class 2 Glazes
Class 3 Stains or Dry Bush
Class 4 Glaze, Underglaze Combo

CREATIVE CHRISTMAS

Class 5 Centerpieces
Class 6 Stockings
Class 7 Wreaths or Swags
Class 8 Others

**CREATIVE CHRISTMAS ORNAMENTS
– SET OF 3**

Class 9 Beadwork
Class 10 Crocheted or Knitted
Class 11 Plastic Canvas
Class 12 Other

**CREATIVE HOLIDAY (NOT
CHRISTMAS)**

Class 13 Easter
Class 14 Halloween
Class 15 Thanksgiving
Class 16 Dolls Creative or Traditional
Class 17 Handwoven Pieces (Any Type)
Class 18 Jewelry
Class 19 Leatherwork

MISCELLANEOUS CREATIONS

Class 20 Ornamental
Class 21 Useful
Class 22 Other

**PAINTING ON EVERYDAY OBJECT
(ACRYLIC PAINT)**

Class 23 Slate
Class 24 Wood
Class 25 Other

**PAINTING ON EVERYDAY OBJECT
(OIL PAINT)**

Class 26 Slate
Class 27 Wood
Class 28 Other

PLASTER CRAFT

Class 29 Figurines
Class 30 Vases or Lamps
Class 31 Other
Class 32 Quilling

STAMPING

Class 33 Cards
Class 34 Wrapping Paper
Class 35 Other
Class 36 Stuffed Animals

**WEARABLE ART – CLOTHING ONLY
(NO KNITTING OR CROCHETING)**

Class 37 Applique-fused & painted
Class 38 Hand Painted
Class 39 Tie Dye
Class 40 Other

**WEARABLE ART – ACCESSORIES (NO
KNITTING OR CROCHETING)**

Class 41 Belts
Class 42 Neckties
Class 43 Scarves
Class 44 Other

DEPARTMENT 19 SECTION 03 (CONT'D)

HANDCRAFTS

WOODCRAFT

Class 45 Whittling or Carving
Class 46 Dimensional Cutouts
Class 47 Furniture
Class 48 Other

WREATHS (NOT CHRISTMAS)

Class 49 Natural Materials
Class 50 Silk Flowers
Class 51 Other

DEPARTMENT 19

SECTION 04

HOUSEHOLD FURNISHINGS

1st \$4.00 2nd \$3.00 3rd \$2.00 4th \$1.00

Class 1	Caning	Class 5	Upholstery
Class 2	Curtains or Drapes	Class 6	Latch Hook
Class 3	Refinished Furniture	Class 7	Band Box
Class 4	Slipcovers		

DEPARTMENT 19

SECTION 05

People With Developmental Disabilities

1st \$4.00 2nd \$3.00 3rd \$2.00 4th \$1.00

1. All exhibits must have been made by the exhibitor - NO COMMERCIAL ARTICLES ACCEPTED.

Class 1 Foods
Class 2 Clothing
Class 3 Crafts

DEPARTMENT 19

SECTION 06

TAXIDERMY

1st \$4.00 2nd \$3.00 3rd \$2.00 4th \$1.00

ANIMALS

Class 1 Mounted animal head
Class 2 Specimen (Birds)
Class 3 Specimen - Other

DEPARTMENT 19
SECTION 07
COLLECTION AND MISCELLANEOUS ITEMS
1st \$4.00 2nd \$3.00 3rd \$2.00 4th \$1.00

NOTE: All collection items must be securely fastened to a mounting board capable of being displayed vertically

COLLECTIONS

- Class 1 Badges
- Class 2 Buttons
- Class 3 Miscellaneous
- Class 4 Post Cards
- Class 5 Pins
- Class 6 Measuring Devices
- Class 7 Spoons
- Class 8 Thimbles
- Class 9 Feathers
- Class 10 Shell Collection

FOLK ART

- Class 11 Small
- Class 12 Large
- Class 13 Overseas War Souvenirs

DEPARTMENT 21
SECTION 01
HOMEMADE WINE

1st \$4.00

2nd \$3.00

3rd \$2.00

4th \$1.00

ENTRY RULES:

The following classes are open to all.

1. Wine entered for competition must be home-produced by an amateur and comply with federal regulation 540
2. Judges may taste classes 1 through 6.

- Class 1 White Table – Dry or Semi-sweet
Class 2 Red Table – Dry or Semi-sweet
Class 3 Pink or Rose Wines – Dry or Semi-sweet Class 4 Fruit Liqueur
Class 5 Herbal Liqueur
Class 6 Specialty Liqueur

DEPARTMENT 22
CONTESTS
CLASS 01

For Arena Competition, see website for rules
mtareafair.org

DEPARTMENT 22
CLASS 02 MOUNTAIN AREA FAIR
HOMEMAKER OF THE YEAR AWARD

1ST 100.00 2ND \$50.00 3RD 25.00

The articles exhibited in this class will be displayed together and be considered as one entry. One theme for all. The theme is **“Growing a Nation.”**

1. 2 sewn articles
2. 1 floral exhibit, artificial or live
3. Collection of 1 article each from the following categories: Canned Goods, Baked Goods, Arts & Crafts
4. Arrangement of display, table cover, backdrop will be considered in judging. Maximum of 4' x 4' table space, card table preferred
5. Entries limited to 6.

DEPARTMENT 22
CLASS 03
POSTER CONTEST
THEME: “Growing a Nation”

Entries accepted Monday, June 22, 2026. until 8 pm.

Free Tiger Tail and Beverage for every entry.

RULES AND REGULATIONS

1. Only one poster may be submitted per exhibitor
2. Poster size must be 14 ½” by 22” (equivalent to ½ of a standard poster board.)
3. Exhibit **MUST** have wire or proper hooks for hanging. String, scotch tape or masking tape is **NOT ACCEPTABLE**.
4. Theme should be used on the poster.
5. Posters will be evaluated on use of the theme, visual appearance and creativity.
6. Age as of January 1 of this year will be used to determine age group eligibility.

Class 04 Age group 8 – 11
Class 05 Age group 12 – 14
Class 06 Age group 15 – 18

DEPARTMENT 22
CLASS 04
SCRAPBOOK CONTEST

1st 25.00

2nd 10.00

3rd 5.00

This Year Theme
“Growing a Nation”

RULES AND REGULATIONS

1. Only one entry per person.
2. The scrapbooks will be judged on their overall appearance and creativity.

DEPARTMENT 22
CLASS 06
Special Contest American 250 (1 Year Only)
PA Apron Contest Celebrating 250 Years of America

1st 25.00

2nd 10.00

3rd 5.00

RULES AND REGULATIONS

1. Exhibitor must be a resident of Pennsylvania - one entry per person
2. Apron Details: Colors - combinations of red, white and blue only
Type:
 1. Half Apron
 2. Bib Apron
 3. Printed Apron
3. Aprons must have been made within one year of fair.
4. Entries to be judged on workmanship, worth of article, appropriateness of material and design, based on the following point system:
 - ▶ Overall appearance 25 points
 - ▶ Creativity 25 points
 - ▶ Workmanship/Suitability 30 points
 - ▶ Design/Color 20 points

First place winner from each local fair will be eligible to enter

Exhibitor may NOT have won 1st place at any other fair in 2025. First place winner will be eligible to enter their apron in the 2026 PA State Farm Show.

For 2026 PA State Farm Show: 1st \$250, 2nd \$150, 3rd \$100



DEPARTMENT 22
CLASS 07
BUCKET OF JUNK COMPETITION

1st \$25.00 2nd \$20.00 3rd \$15.00 4th \$10.00

Create a sculpture using only the items in the bucket.

But NOT THE BUCKET.

A sculpture is defined as a three-dimensional work of art.

You can cut, sand, glue, weld, bolt, fasten, bend, Shape, curl, staple, and paint these items to make your sculpture.

You do not need to use the entire item in the sculpture, but there must be enough used to make it visible.

You cannot add items that are not in the bucket.

There will be a list of contents in each Junk Bucket. Please indicate on the list where each item was used. Include the list when you enter your sculpture.

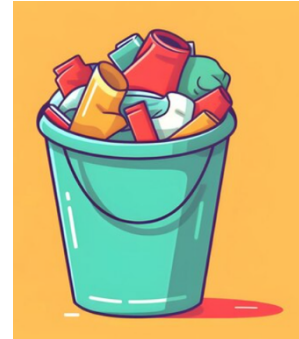
You may connect your entry to a solid base for stability, if needed.

The base will not be considered part of your sculpture.

The bucket must be returned when you enter your sculpture.

Any sculpture larger than 24" x 24" x 32" Tall will be disqualified.

The contest is limited to 10 applicants (individual, child, family or business) and will be on a first come first serve



DEPARTMENT 22
CLASS 08
THE FAIR SALUTES OUR VETERANS

1st \$10.00 2nd \$8.00 3rd \$6.00 4th \$5.00 5th \$4.00

The Mountain Area Community Fair salutes our veterans with these classes. Our Veterans have sacrificed much to keep us safe. We would like to support them in their recovery. These entries will be donated after the fair. Ribbons and awards will be given to the exhibitor. Please no more than 15-20 items per basket. By entering these classes, you are agreeing to donate the basket to the Veterans Affairs

Suggested personal items such as magazines, coffee, cookies, refreshments supplies, spa items, socks, denture items, radios, telephone cards, hygiene products, sewing kits, gift cards etc. are appreciated.

CLASSES 1st \$10 2nd \$8 3rd \$6 4th \$5 5th \$4

1. Gift Basket- For a Man (personal care items)
2. Gift Basket-For a Man (kits/models/crafts/leisure supplies for recovery)
3. Gift Basket- For a Woman (personal care items)
4. Gift Basket- For a Woman (craft kits, leisure supplies for therapy/recovery)

DEPARTMENT 23
APIARY PRODUCTS – MAPLE PRODUCTS

SECTION 01
BEES, HONEY AND WAX

1st \$4.00 2nd \$3.00 3rd \$2.00 4th \$1.00

RULES AND REGULATIONS:

1. Class 1 is to be judged on uniformity of color bees, presence of queen, brood honey, cleanliness and appearance of observation hive.
2. Comb honey to be judged on perfection in filling, capping uniformity, neatness and cleanliness of section. Extracted honey to be judged on body, clarity, and cleanliness. Beeswax to be judged on color and purity.

BEES

Class 1 Bees, any race, two frame observation hive

HONEY

Class 2 Light comb – 3 sec
Class 3 Dark comb – 3 sec
Class 4 Light extracted honey – 3lb. or pt. jar
Class 5 Amber extracted honey – 3lb. or pt. jar
Class 6 Dark amber extracted honey – 3lb. or pt. jar
Class 7 Finely crystallized honey – 3lb. or pt. jar
Class 8 Beeswax not less than – 1lb
Class 9 Collective exhibit of honey, wax, honey products and bees

DEPARTMENT 23
SECTION 02
MAPLE SYRUP AND MAPLE PRODUCTS

1st \$4.00 2nd \$3.00 3rd \$2.00 4th \$1.00

RULES AND REGULATIONS

1. Syrup to be judged on flavor, color, density, and clarity.
2. Sugar to be judged on flavor, appearance, and texture.

- Class 1 Maple syrup – 1qt. container
Class 2 Maple sugar – 1lb. cakes Class 3 Maple cream – 1lb
Class 4 Maple sugar, soft, small individual cakes – not less than 1lb.
Class 5 Collective exhibit – shall be made up of samples, at least 1 of each
corresponding to those in Classes 1, 2, 3, and 4. Products in this class cannot
compete in any other class.

**DEPARTMENT 24
ANTIQUÉ FARM MACHINERY**

**SECTION 01
CLASS FARM TRACTORS**

REGISTRATION

Entries will be accepted until such time as space allotted is filled.

RULES AND REGULATIONS

1. All tractors must be in operating condition.
2. No homemade or ridiculous modifications.

Class 1	Tillage – Plows, Cultivator
Class 2	Planting – Equipment used in planting
Class 3	Harvesting – Harvesters, Threshers
Class 4	Processing of Crops – Grinders, Presses
Class 5	Tractors & Power Units over 25 years old

INDEX

GENERAL RULES	9
DEPARTMENT 8 (EGGS).....	10
SECTION 01 (EGGS).....	10
DEPARTMENT 10 (YOUTH)	11
SECTION 13 (VEGETABLES)	11
SECTION 14 (FRUITS)	12
SECTION 17 (ANNUALS).....	12
SECTION 18 (PERENNIALS).....	13
SECTION 19 (FOLIAGE PLANTS).....	13
DEPARTMENT 11 (YOUTH UNDER 19)	14
SECTION 02 (BAKED GOODS).....	14
SECTION 03 (ARTS & CRAFTS: 12 & UNDER).....	15
SECTION 04 (ARTS & CRAFTS: 12 TO 19)	16
DEPARTMENT 12 (HAY & GRAIN	17
SECTION 01 (GRAIN & SEED CROPS).....	17
SECTION 02 (HAY)	17
SECTION 03 (SILAGE).....	18
SECTION 04 (BROOM CORN)	18
DEPARTMENT 13 (VEGETABLES.....	19
SECTION 01 (VEGETABLES)	20
DEPARTMENT 14 (FRUITS & NUTS).....	22
SECTION 01 (APPLES).....	22
SECTION 03 (PEACHES)	23
SECTION 04 (PEARS).....	23
SECTION 05 (PLUMS).....	23
SECTION 08 (FRUIT FANCY BASKETS)	23
SECTION 09 (BERRIES).....	24
SECTION 11 (GRAPES).....	24
SECTION 12 (EDIBLE NUTS)	24
DEPARTMENT 15 (HOME & DAIRY PRODUCTS).....	25
SECTION 01 (BAKED PRODUCTS)	25
SECTION 02 (CANNED & DRIED PRODUCTS)	27
SECTION 03 (DRIED HERBS).....	28
SECTION 04 (JAMS & JELLIES).....	29
DEPARTMENT 16 (CHRISTMAS TREES).....	30
DEPARTMENT 17 (FLORAL EXHIBITS)	31
SECTION 01 (FLOWERING HOUSE PLANTS)	32
SECTION 02 (FOLIAGE HOUSE PLANTS).....	32
SECTION 03 (ANNUALS).....	33
SECTION 04 (PERENNIALS).....	34
SECTION 05 (ARTISTIC ARRANGEMENTS)	34
SECTION 07 (HANGING BASKETS).....	35
SECTION 08 (LARGEST SPECIMENS).....	35
DEPARTMENT 18 (NEEDLECRAFT).....	36
SECTION 01 (CLOTHING).....	37
SECTION 02 (NEEDLEWORK)	38
SECTION 04 (RUGS)	40
DEPARTMENT 19 (ART & PHOTOGRAPHY)	41
SECTION 01 (PAINTINGS & DRAWINGS.....	41

INDEX

SECTION 02 (PHOTOGRAPHY)	42
SECTION 03 (HANDCRAFTS)	43
SECTION 04 (HOUSEHOLD FURNISHINGS)	44
SECTION 05 (DISABLED)	44
SECTION 06 (TAXIDERMY)	44
SECTION 07 (COLLECTIONS).....	45
DEPARTMENT 21 (HOMEMADE WINE)	46
SECTION 01 (WINE).....	46
DEPARTMENT 22 (CONTESTS).....	47
CLASS 01 ARENA COMPETITIONS	47
CLASS 02 HOMEMAKER OF THE YEAR	48
CLASS 03 POSTER CONTEST	49
CLASS 04 SCRAPBOOK CONTEST	49
CLASS 06 PA Apron Contest.....	50
CLASS 07. Bucket of Junk Competition	51
CLASS 08. The Fair Salutes Our Veterans.....	52
DEPARTMENT 23 (APIARY PRODUCTS)	53
SECTION 01 (BEES, HONEY & WAX).....	53
SECTION 02 (MAPLE SYRUP & PRODUCTS).....	54
DEPARTMENT 24 (ANTIQUA FARM MACHINERY	55
SECTION 01 (FARM EQUIPMENT).....	55
FAIR ENTRY BLANKS	58

MOUNTAIN AREA FAIR

CATTLE PENNING & YOUTH CATTLE SORT

JUNE 24, 2026



Located in the Bates Recycling Arena
@ 119 Elliotsville Road, Farmington, PA 15437



SIGN-UPS OPEN
5:30 PM



CATTLE PENNING STARTS
7:00 PM



YOUTH CATTLE SORT
*Will Follow the
Cattle Penning Event*

★ CATTLE PENNING ★

- ★ 2 Picks / 2 Draws
- ★ \$100 Entry Fee
- ★ 70% Payback

OVER \$2,000 ADDED



★ YOUTH CATTLE SORT ★

- ★ 3 Runs
- ★ \$30 Entry Fee
- ★ All Draws

\$300 ADDED



PRE-REGISTRATION PREFERRED

To help the office and speed up registration, pre-registration is strongly encouraged.

TEXT PRE-REGISTRATIONS TO:



301-616-3651

OR

724-323-6139

Please Include:

- ★ Penning or Youth Sort
- ★ Name
- ★ Phone Number
- ★ For Cattle Penning:
Your 2 Picked Teams

PRE-REGISTRATION
OPEN NOW THROUGH

JUNE 22, 2026

★ Hosted by the ★ ★ ★
**FARMINGTON VOLUNTEER
FIRE DEPARTMENT**
FARMINGTON, PENNSYLVANIA 15437



CONCESSIONS AVAILABLE
★
FAMILY FRIENDLY EVENT

★ COME JOIN US FOR AN EVENING OF FAST-PACED COMPETITION,
GREAT CATTLE, AND FUN FOR ALL AGES! ★

Mountain Area Fair & Farmington Vol Fire Department

Presents

3RD ANNUAL

Steve Kermes

MEMORIAL CAR SHOW

Honoring
Steve's
Passion.
Friendship.
Community.



June 21st

- ★ Rat Rod
- ★ Hot Rod
- ★ Unique
- ★ Most Modified
- ★ Truck over 2000
- ★ Truck under 1999
- ★ Car over 2000
- ★ Car under 1999

REGISTRATION:
11:00AM - 1:00PM

CAR SHOW:
11:00AM - 4:00PM

AWARDS: 2:00 PM
Rain or Shine!

- ★ Antique- 49 and older
- ★ Antique 50-59
- ★ Antique 60-69
- ★ Antique 70-79
- ★ Antique 80-89
- ★ Antique 90-99
- ★ Antique 2000 - newer
- ★ Judges Choice

IN CONJUNCTION WITH

Craft/ Vendor Show

★  **CONCESSIONS OPEN!**  ★

CHICKEN DINNER ★ FUNDRAISER



IN CONJUNCTION WITH
CAR SHOW AND CRAFT & VENDOR SHOW



— INCLUDES: —

- ★ GRILLED CHICKEN
- ★ BAKED BEANS
- ★ MAC N CHEESE
- ★ COLESLAW
- ★ AND ROLL

\$15.00

EAT HERE OR TAKE OUT

SERVING 11:00AM – 4:00PM

While Supplies Last!

SHOP LOCAL
SUPPORT
SMALL

3RD ANNUAL *Steve Kermes* — MEMORIAL — **CAR SHOW**

• Handmade
• Home Decor
• Jewelry
• Clothing
• Much More!

★ **JUNE 21ST** ★

THANK YOU
FOR SUPPORTING
LOCAL! ❤️



CAR SHOW:
11:00AM – 4:00PM



REGISTRATION:
11:00AM – 1:00PM

CONCESSIONS
OPEN!

★ 119 ELLIOTTSTVILLE RD
FARMINGTON, PA 15437 ★

AWARDS: 2:00 PM
Rain or Shine!



★ **INTERESTED IN BECOMING A VENDOR?** ★

MESSAGE US ON FACEBOOK FOR
VENDOR REGISTRATION AND INFORMATION.

Mountain Area Fair &
Farmington Vol Fire Department
Presents



CRAFT & VENDOR SHOW

SHOP LOCAL
SUPPORT
SMALL

IN CONJUNCTION WITH
3RD ANNUAL *Steve Kermes*
— MEMORIAL —
CAR SHOW

• Handmade
• Home Decor
• Jewelry
• Clothing
• Much More!

★ JUNE 21ST ★

 CAR SHOW:
11:00AM - 4:00PM

 REGISTRATION:
11:00AM - 1:00PM

THANK YOU
FOR SUPPORTING
LOCAL!

hand
made

★ COME SHOP • EAT • ENJOY THE DAY! ★



CONCESSIONS
OPEN!

AWARDS: 2:00 PM
Rain or Shine!



★ INTERESTED IN BECOMING A VENDOR? ★
MESSAGE US ON FACEBOOK FOR
VENDOR REGISTRATION AND INFORMATION.

MOUNTAIN AREA FAIR

FARMINGTON VOL. FIRE DEPT.

KART RACING

JUNE 27, 2026



Fireworks

Hot Laps
5pm - 6pm

Racecars
Required

RACING CLASSES

JUICE BOX
Top 3 Trophies

JR GREEN PLATE
14-16yrs Age
Top 3 Trophies
+ 10% of Start Entry Fee

JR PURPLE PLATE
17-18yrs Age
Top 3 Trophies
+ 10% of Start Entry Fee

Clone 380

1st \$750	6th \$50
2nd \$325	7th \$50
3rd \$200	8th \$50
4th \$150	9th \$40
5th \$100	10th \$30
11th - 16th \$20	

Predator 360

1st \$150
2nd \$100
3rd \$50

Predator 400

1st \$150
2nd \$100
3rd \$50

RACING 7:00 pm

119 Elliotsville Rd., Farmington, PA 15437

GENERAL ARENA ADMISSION: \$10 Adult / \$5 Kid
PIT PASS: \$20 KART ENTRY: \$20 per Class

★ PRESENTED BY ★
MOUNTAIN AREA FAIR ★

★ SPONSORED BY ZIEBART OF SOUTH HILLS ★

Paint and Sip

★ BRING YOUR OWN DRINKS ★

NO EXPERIENCE
NEEDED!

★
JUST BRING
YOUR SPIRIT!



WEDNESDAY, JUNE 24, 2026 ★ 7:00 PM

★ **BAR AND CONCESSIONS WILL BE OPEN** ★

★ **DATE:** Wednesday, June 24, 2026

★ **TIME:** 7:00 PM

★ **LOCATION:** POW/MIA Building
119 Elliottsville Rd
Farmington, PA 15437

★ **COST:** \$25 per adult (8½ x 14 canvas)
\$15 per child (8 x 10 canvas),
ages 10 and under

★ **RSVP:** jose.tammy49@gmail.com
(Pay at the door)

★ **PAY ONLINE:**
Pay online using the link in the comments.

★ **ONLY 50 ADULT SPOTS • 20 CHILD SPOTS**